

# CERTIFICATE OF LOCATION OF GOVERNMENT CORNER

NORTHEAST \_\_\_\_\_ Corner of Section 36, Township 107N, Range 40W

5th Principal Meridian, State of Minnesota, County of MURRAY

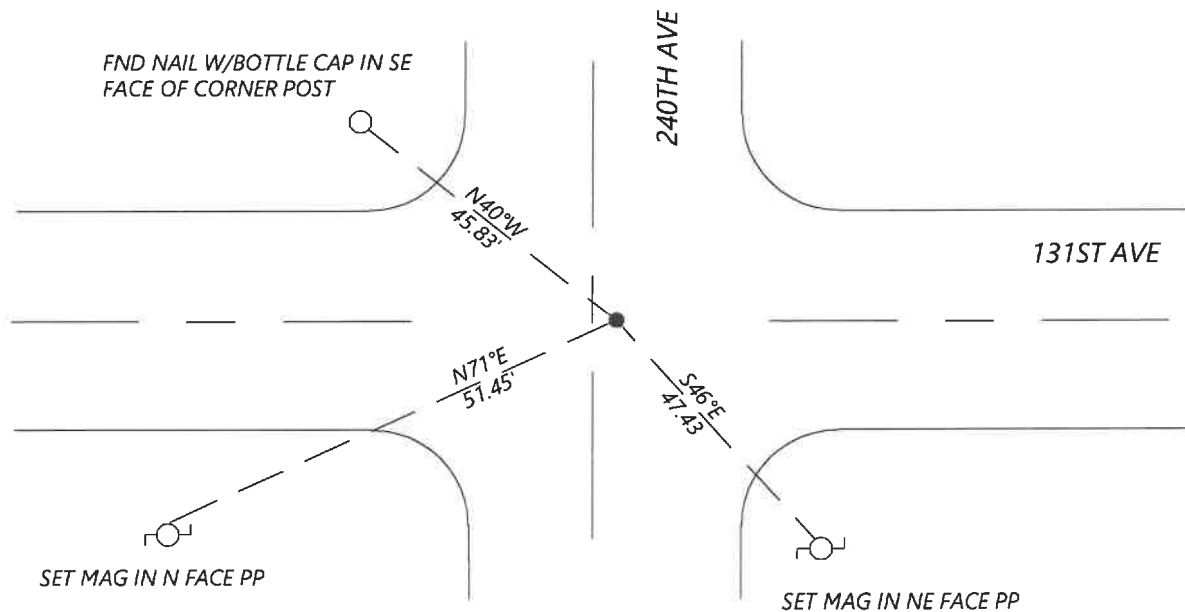
At the corner location shown on the sketch:

On 8/26/2020 found a IRON WITH CAP LS 11934 DOWN 0.1FT  
DATE

left monument as found       lowered monument       removed monument (explain)

On \_\_\_\_\_ placed a \_\_\_\_\_  
DATE

### SKETCH OF REFERENCE TIES



N.T.S.

Statement of evidence for this corner location is on back of this page.

I hereby certify that this document was researched and prepared by me or under my direct supervision and that I am a licensed Land Surveyor under the laws of the State of Minnesota.

Signature *[Handwritten Signature]*

Date 6/16/2021 License No. 45874

Title:

- Land Surveyor       Professional Engineer  
 County Surveyor       County Engineer

### OFFICE OF THE COUNTY RECORDER

County of Murray

I hereby certify that this document was filed in the Co.

Recorder's office at \_\_\_\_\_ M. on the \_\_\_\_\_ day of \_\_\_\_\_ A.D. 20 \_\_\_\_\_

County Recorder *[Handwritten Signature]*

by JUN 22 2021, Deputy

DOCUMENT NO. \_\_\_\_\_

JASON LATZKE  
Minnesota License No. 45874

**Statement of Evidence:**

Northeast Corner of Section 36, Township 107 North, Range 40 West, 5th Principal Meridian, Murray County, Minnesota.

*JUNE 29, 1932 - SURVEY RECORD FOR SECTION 36 SHOWS FOUND OLD CORNER, PLACED A CONCRETE MARKER.*

*MAY 15, 1975 - HWY DEPT. RECORDS SHOW A CONCRETE MONUMENT 12" BELOW GRADE. N&C CORNER POST NW 45.64; N&C CORNER POST NE 49.05. N&C PP SE 46.76.*

*SEPTEMBER 2020 - WESTWOOD PROFESSIONAL SERVICES SEARCHED AND FOUND IRON W/ CAP LS 11943 AND 1 TIE FROM 1975 HWY DEPT RECORDS, WHICH FIT WELL. ACCEPTED MONUMENT AND SET ADDITIONAL REFERENCES.*

Analysis of the recovered data, field evidence and survey measurements, indicates that the monument found is the correct perpetuation of this corner. For additional information concerning this corner please contact Westwood Professional Services.